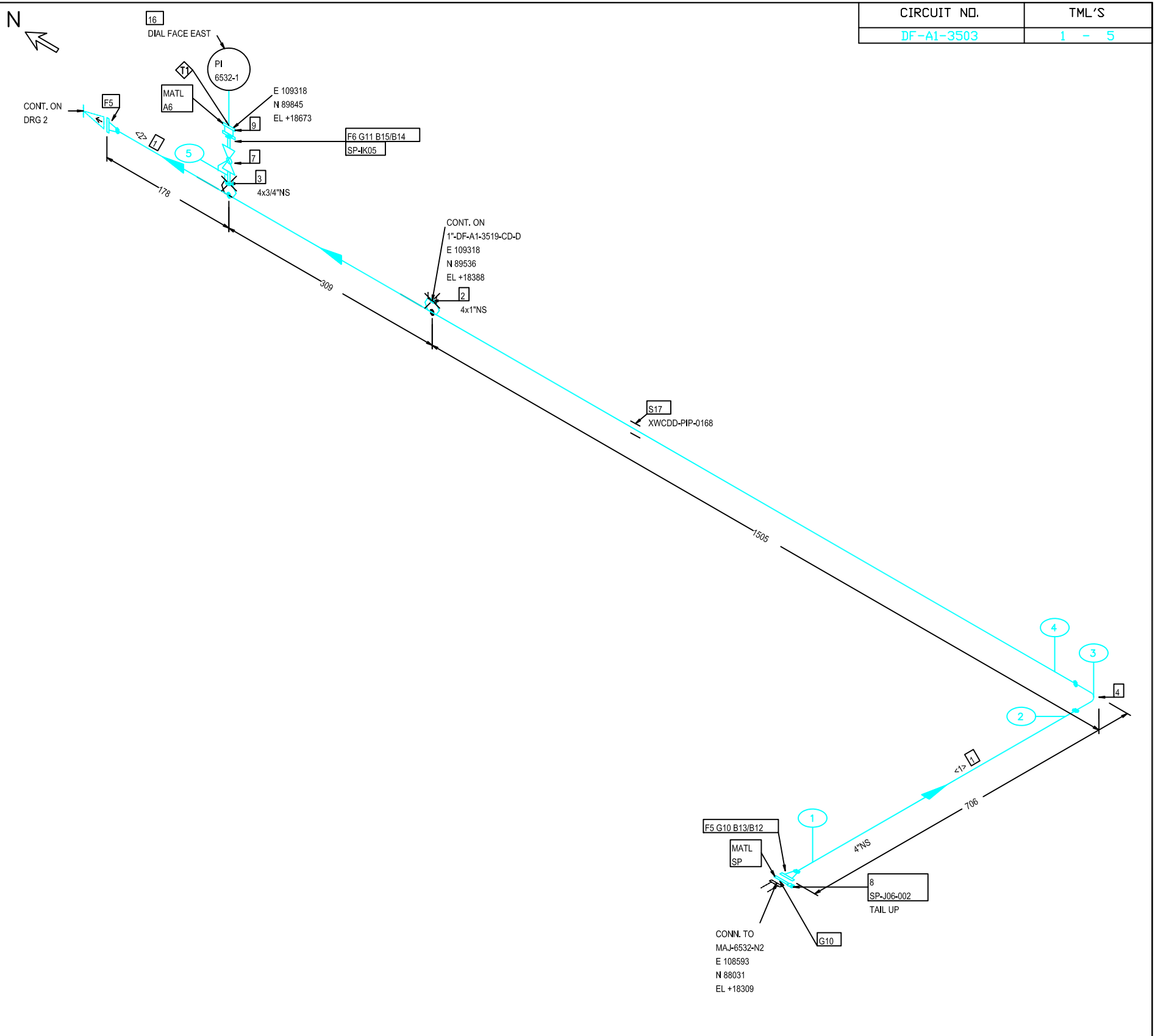


FABRICATION MATERIALS			
PT NO	COMPONENT DESCRIPTION	N.S. (INS)	QTY
<b>PIPE</b>			
1	PIPE BE Sch-40 ASME B36.10 ASTM A106 Gr. B, SEAMLESS	4	2.5M
<b>FITTINGS</b>			
2	SOCKOLET 3000# ASTM A105	4 x 1	1
3	SOCKOLET 3000# ASTM A105	4 x 3/4	1
4	ELBOW, 90 DEG BW LR Sch-40 ASME B16.9 ASTM A234 Gr. WPB, SEAMLESS	4	1
<b>FLANGES</b>			
5	FLANGE WN 150# RF Sch-40 ASME B16.5 ASTM A105	4	2
6	FLANGE SW 150# RF Sch-XXS ASME B16.5 ASTM A105	3/4	1
<b>VALVES / IN-LINE ITEMS</b>			
7	BALL VALVE, FB, 800#, SW clw 2 nipples 100mm PE, VB-471	3/4	1
<b>ERECTION MATERIALS</b>			
PT NO	COMPONENT DESCRIPTION	N.S. (INS)	QTY
<b>FITTINGS</b>			
8	SPECTACLE BLIND SP-J06	4	1
<b>FLANGES</b>			
9	FLANGE, BLIND 150# RF ASME B16.5 A182 Gr F316L clw 1/2" NPT TAPPED HOLE ASTM A182 Gr.F316L, SEAMLESS	3/4	1
<b>GASKETS</b>			
10	GASKET 150# RF SPIRAL WOUND 316 SS, 4.4mm thk, 316 SS OUTER AND INNER RINGS, GRAPHITE FILLER, ASME B16.20	4	2
11	INSULATION KIT SPIK05	3/4	1
<b>BOLTS</b>			
12	110 STUD, CONTINUOUS THREAD ASTM A193 Gr. B7, PTFE COATED	5/8	8
13	HEX NUTS ASTM A194 Gr. 2H, PTFE COATED	5/8	16
14	70 STUD, CONTINUOUS THREAD ASTM A193 Gr. B7, PTFE COATED	1/2	4
15	HEX NUTS ASTM A194 Gr. 2H, PTFE COATED	1/2	8
<b>INSTRUMENTS</b>			
16	INSTRUMENT CONNECTION PI 6532-1	3/4	1
<b>SUPPORTS</b>			
17	COVERED U-BOLT (GRIP) FOR CS/LTCS/SS/DU 4-CL46 Carbon Steel	4	1



CIRCUIT NO.	TML'S
DF-A1-3503	1 - 5

**NOTES:**

- ALL DIMENSIONS ARE IN mm UNLESS OTHERWISE STATED
- THICKNESS MEASUREMENT LOCATION DATA RANGE IS 1 THRU 5.

**BASILINE CORROSION SURVEY SIT-6004 PERFORMED BY: CHEYENNE TECHNICAL SERVICES**  
 DAVID LYNN RECTOR (INSTRUMENT ID: 101769801/PROBE ID: 780233)  
 DAVID RYAN RECTOR (INSTRUMENT ID: 091694903/PROBE ID: 796708)  
 JASON RANDOL HOWARD

LEGEND:		FW/FFW	FIELD WELD/FIELD FIT WELD	①	WELD NO.	CLIENT LOGO HERE	CLIENT LOGO HERE
		OSFW/OSFFW	OFFSHORE FIELD WELD/FIELD FIT WELD	⑤	SUPPORT WELD NO.		
		XXX-XX-XXXX-01	SPOOL NUMBER	①	THREAD NO.	Project Name/Location Here	
		---	PIPE WITH TRACED	①	ITEM NO.		
		---	PIPE WITH INSULATION	<1>	PIECE NUMBER	TONKAWA, OKLAHOMA (580)628-0222 (580)716-1917	
		P&ID NO.: 2007-4765-01-0135		PGA NO.:		FACILITY LONG TERM PRODUCTION TEST PROGRAM	
		LINE NO.: 4"-DF-A1-3503		TRACING: N/A			
		TEST MEDIUM: WATER		OPER PRESS: 3.45 Barg		SPEC.: A1	
		TEST PRESS: 15.45 Barg		OPER TEMP.: 35 Deg C		PWHT: N/A	
		NDT: 20%		DES PRESS: 10.3 Barg		STRESS CALC. NO: N/A	
		INS.: N/A		THK.: N/A mm		DES TEMP.: 65 Deg C	
				PAINT: 1		ISOMETRIC DRAWING NUMBER 4"-DF-A1-3503-CD-D-SD	
						SHEET 1 OF 3	
						REV C4	