

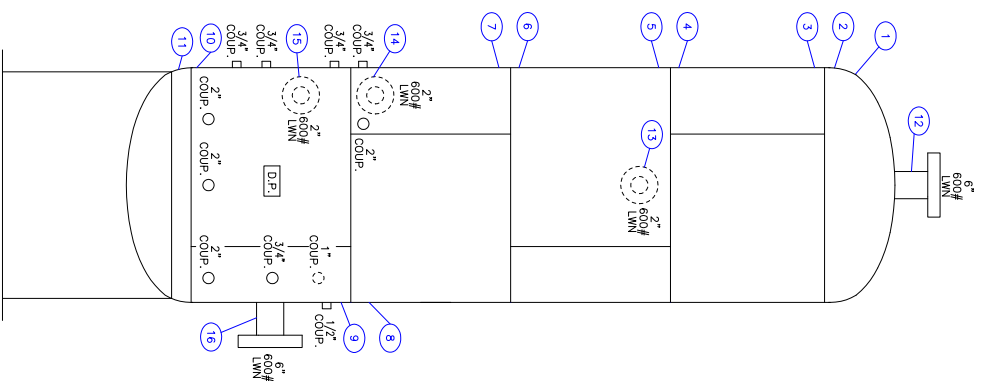
TITLE: V-513, TEG CONTACTOR
 UNIT: COMPRESSOR FACILITY

SKID #:
 LOCATION: CARRIZO SPRINGS, TX



PRESSURE VESSEL DATA

MANUFACTURER	SURFACE EQUIPMENT CORPORATION
SERIAL NO	1211-022
NATIONAL BOARD #	1572
DATE OF CONST.	2012
MAMP	1440 PSI @ 125°F
MDMT	-20°F @ 1440 PSI
DIAMETER	42" OD
HT OR LENGTH (S.S.)	420" S/S
THICKNESS	1.625"
MATERIAL	SA-516-70
LONG SEAM	YES
TYPE	2:1 ELLIPTICAL
HEADS	THICKNESS 1.539"
MATERIAL	SA-516-70
CODE STAMP (Y OR N)	YES
RADIOGRAPHY	RT-1
NOZZLE FLANGE RAT.	600#



PSV DATA	PSV #511
SIZE	1 1/2" 6"/15
SERIAL	76508
STANDARD	ASME SECTION VIII
SET PRESS.	1440 PSIG



INSPECTED BY: DLR

DATE: 12/15
 UTD BR: JBC
 DATE: 11/15

V-513
 TEG CONTACTOR

CLIENT LOGO HERE

