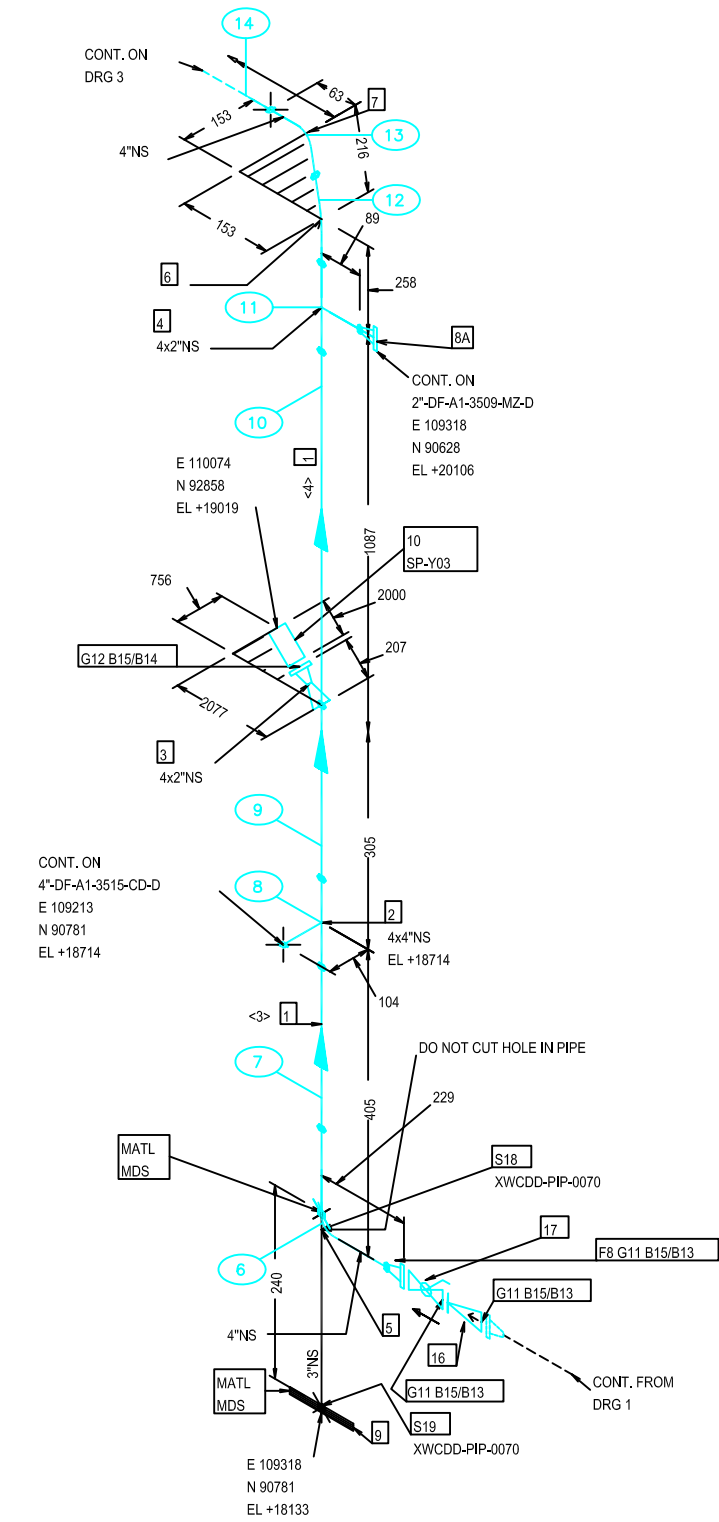


FABRICATION MATERIALS				
PT NO	COMPONENT DESCRIPTION	N.S. (INS)	ITEM CODE	QTY
PIPE				
1	PIPE BE Sch-40 ASME B36.10 ASTM A106 Gr. B, SEAMLESS	4	A1/PIP,4	1.4M
FITTINGS				
2	TEE, EQUAL BW Sch-40 ASME B16.9 ASTM A234 Gr. WPB, SEAMLESS	4 x 4	A1/TEE,4	1
3	NIPPOFLANGE 150MM LONG 150# RF Sch-40xSch-80 ASTM A105	4 x 2	A1/NIFL,4x	1
4	TEE, REDUCING BW Sch-40xSch-80 ASME B16.9 ASTM A234 Gr. WPB, SEAMLESS	4 x 2	A1/TER,4x2	1
5	ELBOW, 90 DEG BW LR Sch-40 ASME B16.9 ASTM A234 Gr. WPB, SEAMLESS	4	A1/90LMS,4	1
6	ELBOW, 90 DEG BW LR Sch-40 ASME B16.9 ASTM A234 Gr. WPB, SEAMLESS	4	A1/90L,4	1
7	ELBOW, 45 DEG BW LR Sch-40 ASME B16.9 ASTM A234 Gr. WPB, SEAMLESS	4	A1/45L,4	1
FLANGES				
8	FLANGE WN 150# RF Sch-40 ASME B16.5 ASTM A105	4	A1/FLGA,4	1
8A	FLANGE WN 150# RF Sch-80 ASME B16.5 ASTM A105	2	A1/FLGA,2	1
ERECTION MATERIALS				
PT NO	COMPONENT DESCRIPTION	N.S. (INS)	ITEM CODE	QTY
FITTINGS				
9	BASE / ENDPLATE FOR TRUNNION 3-VA12SS-100-100-16-E-CS Carbon Steel	3 x 3	MDS/AC18A-	1
10	SAMPLE PROBE SPY03	2	A1/SPY03,2	1
GASKETS				
11	GASKET 150# RF SPIRAL WOUND 316 SS, 4.4mm thk. 316 SS OUTER AND INNER RINGS, GRAPHITE FILLER, ASME B16.20	4	A1/GSK,4	3
12	GASKET 150# RF SPIRAL WOUND 316 SS, 4.4mm thk. 316 SS OUTER AND INNER RINGS, GRAPHITE FILLER, ASME B16.20	2	A1/GSK,2	1
BOLTS				
13	100 STUD, CONTINUOUS THREAD ASTM A193 Gr. B7, PTFE COATED	5/8	BLTCS/STB,	24
14	90 STUD, CONTINUOUS THREAD ASTM A193 Gr. B7, PTFE COATED	5/8	BLTCS/STB,	4
15	HEX NUTS ASTM A194 Gr. 2H, PTFE COATED	5/8	BLTCS/NUT,	56
VALVES / IN-LINE ITEMS				
16	CHECK VALVE, SWING TYPE, 150# RF, VC-101	4	A1/SCHK,4	1
17	BALL VALVE, RB, 150# RF, VB-100	4	A1/VBR,4x	1
SUPPORTS				
18	TRUNNION REINFORCING PAD 4-VA13-E Carbon Steel	4	MDS/AT29B-	1
19	TRUNNION 4-3-VA11-176	3	MDS/TT04.8	1



NOTES:

- ALL DIMENSIONS ARE IN mm UNLESS OTHERWISE STATED
- THICKNESS MEASUREMENT LOCATION DATA RANGE IS 6 THRU 14.

BASILINE CORROSION SURVEY STI-6004 PERFORMED BY: CHEYENNE TECHNICAL SERVICES
 DAVID LYNN RECTOR (INSTRUMENT ID: 101769801/PROBE ID: 780233)
 DAVID RYAN RECTOR (INSTRUMENT ID: 091694903/PROBE ID: 796708)
 JASON RANDOL HOWARD

LEGEND: FW/FFW FIELD WELD/FIELD FIT WELD OSFW/OSFFW OFFSHORE FIELD WELD/FIELD FIT WELD XXX-XX-XXXX-01 SPOOL NUMBER PIPE WITH TRACED PIPE WITH INSULATION ① WELD NO. (S) SUPPORT WELD NO. ① THREAD NO. ① ITEM NO. <1> PIECE NUMBER										CLIENT LOGO HERE		CLIENT LOGO HERE		 TONKAVA, OKLAHOMA (580)628-0222 (580)716-1917	
P&ID NO.: 2007-4765-01-0135						PGA NO.:									
LINE NO.: 4'-DF-A1-3503				TRACING: N/A		DES. CODE: B3L3									
TEST MEDIUM: WATER			OPER PRESS: 3.45 Barg		SPEC.: A1		FACILITY								
TEST PRESS: 15.45 Barg			OPER TEMP.: 35 Deg C		PWHT: N/A		LONG TERM PRODUCTION TEST PROGRAM								
NDT: 20%			DES PRESS: 10.3 Barg		STRESS CALC. NO: N/A		CONTRACT NO.								
INS.: N/A			THK.: N/A mm		DES TEMP.: 65 Deg C		PAINT: 1		ISOMETRIC DRAWING NUMBER						
REV	DATE	DESCRIPTION			DRN	CHK	APP	CLIENT APP	Project Name/Location Here 4"-DF-A1-3503-CD-D-SD 2 OF 3 C6						